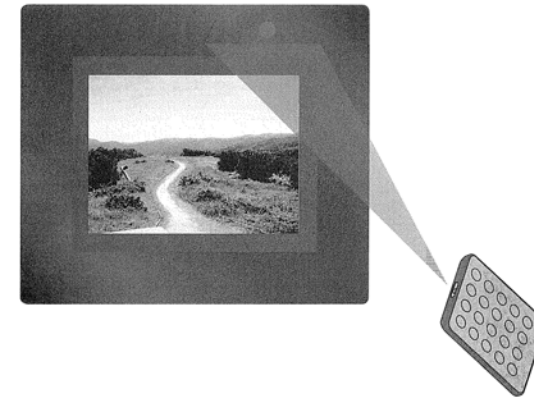


# WinBook<sup>®</sup>

Digital Picture Frame

User Guide



Print in China



Q41GDP07006 1A

Model No: DPF7W1

Version: A

## Table of contents

---

1.	Safety .....	2
	1.1. Regulatory Information .....	2
	1.2. Environmental care .....	3
	1.3. Battery replacement .....	3

---

2.	Operating the unit .....	4
	2.1. Connect the AC power .....	4

---

3.	Your Digital Photo Frame .....	5
	3.1. DPF overview .....	5
	3.2. Front view .....	6
	3.3. Back View .....	6
	3.4. Side View .....	6
	3.5. Top View .....	7
	3.6. Remote control view .....	8

---

4.	Use the menus .....	9
	4.1. Access the Main menu .....	9
	4.2. Access the Slideshow menu .....	9
	4.3. Access the Source menu .....	10
	4.4. Access the File Management menu .....	10
	4.5. Access the Setup Menu .....	11

---

5.	Specifications .....	14
----	----------------------	----

---

## 1. Safety

Before operating this unit (digital photo frame), please carefully read and follow the instructions below.

### Safety Notes

- The display surface is sensitive and pressing the screen should be avoided.
- The Device is not waterproof. Don't spill any liquid on the device.
- Don't place or use the device under extreme temperatures, strong static electricity or excessive vibration.
- Only use the supplied power DC adapter. Using any other adapter may cause the damages.

### 1.1 Regulatory Information

#### FCC Compliance

- This device complies with Part 15 of the FCC Rules. Operation is subject to the following two conditions: (1) this device may not cause harmful interference, and (2) this device must accept any interference received, including interference that may cause undesired operation.
- NOTE: This equipment has been tested and found to comply with the limits for a Class B digital device, pursuant to Part 15 of the FCC Rules. These limits are designed to provide reasonable protection against harmful interference in a residential installation. This equipment generates, uses and can radiate radio frequency energy and, if not installed and used in accordance with the instructions, may cause harmful interference to radio communications. However, there is no guarantee that interference will not occur in a particular installation. If this equipment does cause harmful interference to radio or television reception, which can be determined by

turning the equipment off and on, the user is encouraged to try to correct the interference by one or more of the following measures:

- Reorient or relocate the receiving antenna.
- Increase the separation between the equipment and receiver.
- Connect the equipment to an outlet on a circuit different from that to which the receiver is connected.
- Consult the dealer or an experienced radio/TV technician for help.

#### WARNING:

Any unauthorized modification to this equipment could result in the revocation of the authorization to operate the equipment and void the product warranty.

CE 

The shipped version of this device complies with the requirements of the EEC directives 73/23/EEC "Low voltage directive".

UL/CUL

CONFORMS TO ANSI/UL STD. 60950-1

CERTIFIED TO CAN/CSA STD. C22.2 No. 60950-1

#### WEEE

Information for users applicable in European Union countries

The symbol on the product or its packaging signifies that this product has to be disposed separately from ordinary household wastes at its end of life. Please be aware that it is your responsibility to dispose of electronic equipment at recycling centers so as to help conserve our natural resources. Each country in the European Union should have its collection centers for electrical and electronic equipment recycling. For information about your recycling drop off area, please contact your local related electrical and electronic equipment waste management authority or the retailer where you purchased your product.

Hg 

Information for users applicable in United States of America

LAMP(S) inside this product contain mercury and must be recycled or disposed of according to local, state or federal laws. For more information, contact the electronic industries alliance at [www.eiae.org](http://www.eiae.org) for lamp specific disposal information check [www.lamprecycle.org](http://www.lamprecycle.org)

## 1.2 Environmental care

### Recycling your packaging

The packaging of this product is intended to be recycled. Contact your local authorities for information on how to recycle the packaging.

### Disposing your used product



Your product is manufactured with high-quality materials and components that can be recycled and reused. When you see the crossed-out wheel bin symbol attached to a product, it means the product is covered by the European Directive 2002/96/EC:

Do not dispose of your used product with household waste. Ask your dealer for information on how to safely dispose of the product. Uncontrolled waste disposal harms both the environment and human health.

### Disposing used batteries

The supplied batteries do not contain mercury or cadmium. Discard supplied and all other used batteries according to your local regulations.

## 1.3 Battery replacement

**CAUTION:** There is a danger of explosion if the battery is incorrectly replaced. Replace only with the same or equivalent battery type recommended by the manufacturer. Discard used batteries according to the manufacturer's instructions. Do not expose the battery to excessive heat such as sunshine, fire, etc.

## 2. Operating the unit

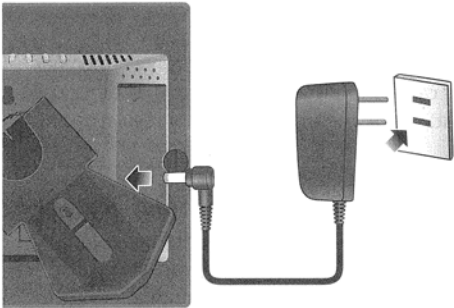
### Checking the package contents

Open the package carefully to make sure you have the following items.

1. Digital photo frame
2. User Manual
3. Foot stand
4. USB cable
5. Quick Start Guide
6. AC power adapter
7. Remote controller (Battery)
8. Warranty card
9. Removable bezel.

### 2.1 Connect the AC power

- Attach the foot stand to the lock slot on the back of the unit.
- Plug the other end into an AC power outlet.

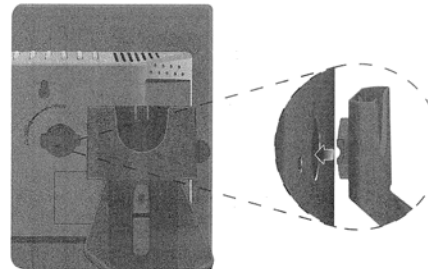


## 3. Your Digital Photo Frame

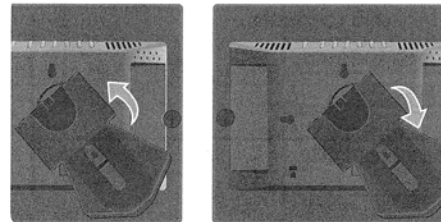
This section gives you an overview of the commonly used controls and functions.

### 3.1 DPF overview

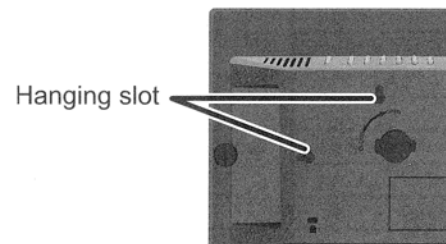
1. Installing the foot stand. Attach the foot stand to the lock slot on the back of the unit.



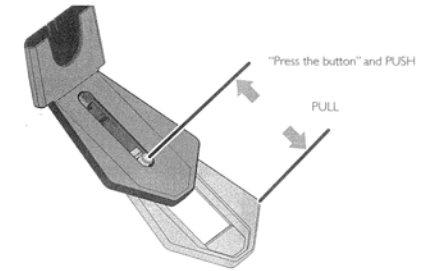
2. Rotate the foot stand counter-clockwise until it is secured to the digital photo frame.



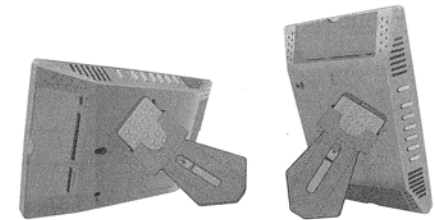
3. By using the hanging slot, you can hang the unit horizontally/vertically on a wall without installing the foot.



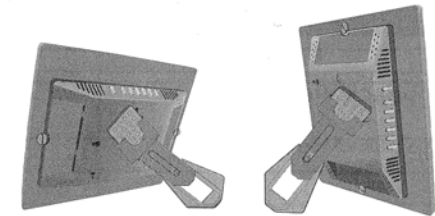
4. Adjustable foot stand



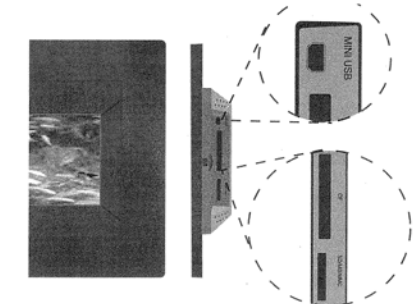
5. Place this unit horizontally (recommended direction) or vertically.  
5-1 Without Frame



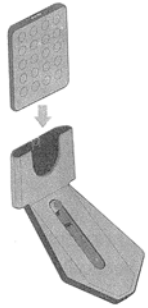
5-2 With Frame



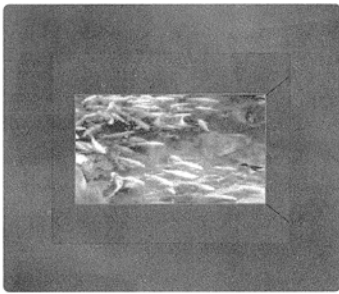
6. Use a memory card or USB flash drive



- Fit the remote controller into the top end of of the foot stand.

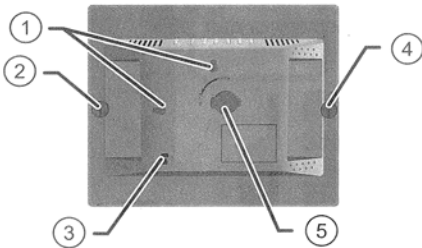


### 3.2 Front view



### 3.3 Back View

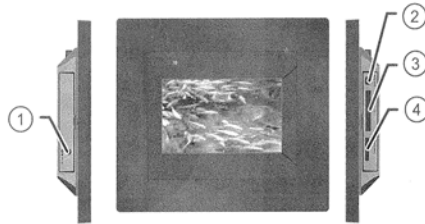
On the back of the unit



- Wall-hanging holes
- Frame mounting screw
- Kensington slot
- Frame mounting screw
- Stand seat

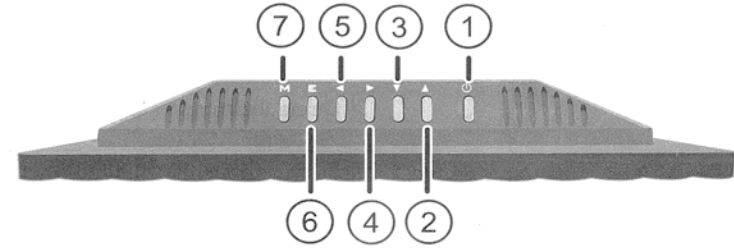
### 3.4 Side View

Use a memory card or USB flash drive.



- DC Power input
- Mini USB connector
- CF slot
- SD/MS/MMC slot

### 3.5 Top View

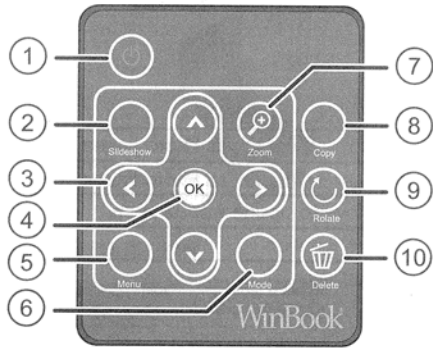


1	Power		Power off	Turn off the Digital Photo Frame.
			Power on	Turn on the Digital Photo Frame.
2	Up		OSD Menu mode	Move to upside icon or item.
			Slide Show Mode	No function
			Calendar Mode	Last year.
			Clock Mode	No function
3	Down		OSD Menu mode	Move to down side icon or item.
			Slide Show Mode	Brightness adjust
			Calendar Mode	Next year.
			Clock Mode	No function
4	Right		OSD Menu mode	Move to right side icon or adjusting up.
			Slide Show Mode	No function
			Calendar Mode	Next month
			Clock Mode	No function
5	Left		OSD Menu mode	Move to left side icon or adjusting down.
			Slide Show Mode	No function
			Calendar Mode	Last month
			Clock Mode	No function
6	Enter		OSD Menu mode	Go to lower levels menu or selection item.
			Slide Show Mode	Go to short cut menu for Slide Show
			Calendar Mode	No function
			Clock Mode	No function
7	Mode		OSD Menu mode	Go to next Mode
			Slide Show Mode	Go to next Mode
			Calendar Mode	Go to next Mode
			Clock Mode	Go to next Mode

### 3.6 Remote control view

#### Remote control keys

This section provides a detailed overview of remote control features.



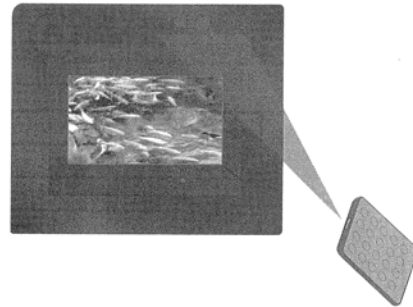
1. **Power**  
Power on/off
2. **Slideshow**  
Shortcut key for slide show mode
3. **</>, V / ^**  
Refer to the direction key definition on navigation buttons
4. **OK**  
Refer to the Enter key definition on navigation buttons
5. **Menu**  
Shortcut key for Main Menu
6. **Mode**  
Refer to the Mode definition on navigation buttons
7. **Zoom**  
Change zoom ratio, in slideshow mode
8. **Copy**  
Copy the current image to Favorite in slide show mode

#### 9. Rotate

Rotate the current image clockwise by 90 degree in slide show mode

#### 10. Delete

Delete the current image



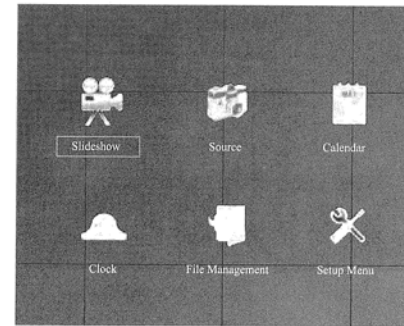
**NOTE:** Recommended DPF Remote Control Operating Position

## 4. Use the menus

On-screen menus help you install your Digital photo frame, adjust picture and set other features.

### 4.1 Access the Main menu

1. Press **Mode** to display the main menu.  
The following menu displays:

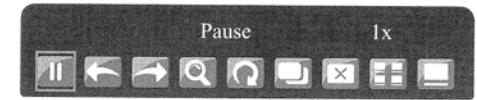


The main menu offers the following options:

- **Slideshow:** Use the Slideshow function to profound the photos.
  - **Source:** Use the Source function to view which storage type you are using now.
  - **Calendar:** Use the Calendar function to show/display the year and moon on the displayed.
  - **Clock:** Use the Clock function to set the time that will be displayed on the LCD screen.
  - **File Management:** Use the File Management menu to browse, delete or add a selected picture into My Favorite folder.
  - **Setup Menu:** Use the Setup Menu function to adjust the system settings to display system information.
2. Press **Mode** to select other modes.

### 4.2 Access the Slideshow menu

1. Press **Mode** to enter the **main menu** and select **Slideshow**.
2. Press **Enter** key to access the **Slideshow**.  
The **Slideshow** menu is displayed:

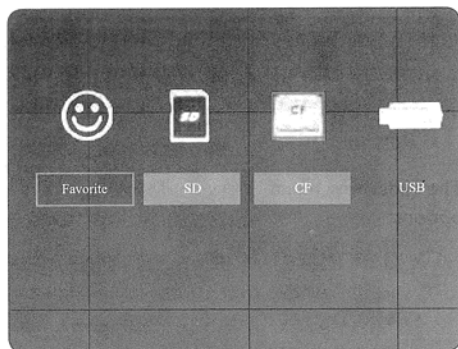


The Slideshow menu offers the following options:

- **Pause (Play):** Play/Pause
  - **Previous:** Previous Image
  - **Next:** Next Image
  - **Zoom:** Change Zoom Ratio for the Current Image
  - **Rotate:** Rotate current image clockwise by 90°
  - **Copy:** Copy Current Image to Favorite
  - **Delete:** Delete Current Image
  - **Thumbnail:** Thumbnail Browsing Mode
  - **Wallpaper:** Set as Background Image
3. Press **<** or **>** to select a setting.
  4. Press **Enter** key to confirm.
  5. Press **Mode** to exit.

#### 4.3 Access the Source menu

1. Press **Mode** to access the main menu and select **Source**.
2. Press **Enter** key to access the **Source**.  
The **Source** menu is displayed:

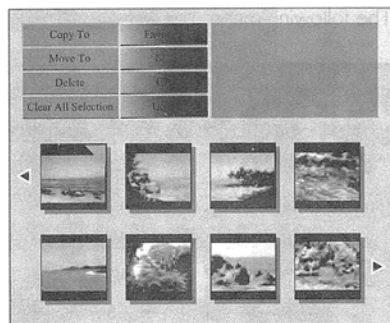


The Source menu offers the following options:

- **Favorite:** Select Favorite as Source
  - **SD:** Select SD (MS/ MMC ) as Source
  - **CF:** Select CF as Source
  - **USB:** Select USB as Source
3. Press < or > to select a setting.
  4. Press **Enter** to confirm.
  5. Press **Mode** to exit.

#### 4.4 Access the File Management menu

1. Press **Mode** to access the main menu and select **File Management**:
2. Press **Enter** key to access the File Management menu.  
The **File Management** menu is displayed:

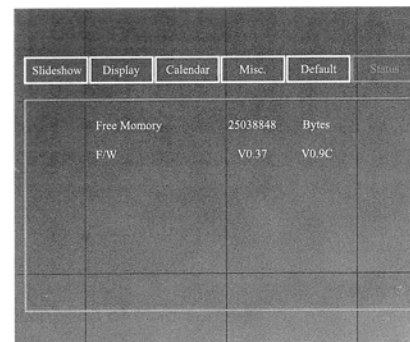


The Slideshow menu offers the following options:

- **Copy to:** Copy Selected Image to...
  - **Move:** Move Selected Image to...
  - **Delete:** Delete Selected Image
  - **Clear All Selections:** Clear selected Image Mark
3. Press < or > to select a setting.
  4. Press **Enter** to confirm.
  5. Press **Mode** to exit.

#### 4.5 Access the Setup Menu

1. Press **Mode** to access the main menu and select **Setup Menu**:
2. Press **Enter** to access the **Setup Menu**.  
The **Setup Menu** is displayed:

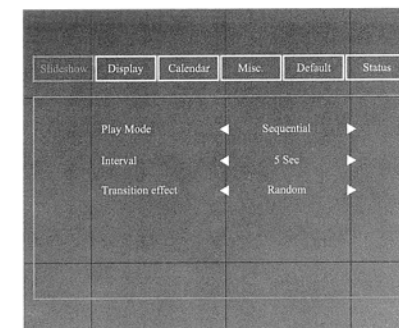


The Setup Menu offers the following options:

- Slideshow
  - Display
  - Calendar
  - Misc.
  - Default
  - Status
3. Press < or > to select a setting.
  4. Press **Mode** to exit.

#### 4.5.1 Adjust Slideshow settings

1. Press **Enter** to access the **Setup Menu** and select **Slideshow**.  
The **Slideshow** menu is displayed:



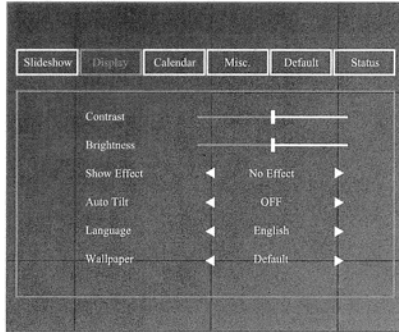
Description of Slideshow settings:

- **Play Mode:** Image Play Mode Selection (Sequential, Random)
  - **Interval:** Image Play Time Selection (OFF, 5 sec, 10 sec, 30 sec, 1min, 5min, 30min, 1hr, 4hr, 12hr, 1day).
  - **Transition:** Image Transitions Selection (None, Fade, Shutter, Cross comb, Mask, Brick, Dissolve Bar, Random)
2. Press < or > to confirm.
  3. Please **V** or **Λ** to select the setting.
  4. Press **Mode** to exit.

#### 4.5.2 Adjust Display settings

1. Press **Enter** to access the **Setup Menu** and select **Display**.

The **Display** menu is displayed:



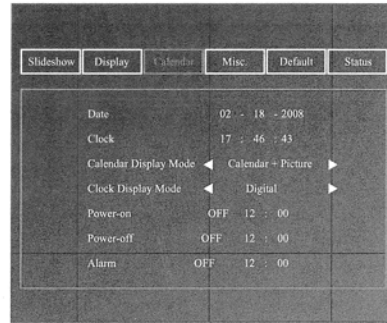
#### Description of Display settings:

- **Contrast:** Contrast Ratio Adjustment.
  - **Brightness:** Brightness Adjustment.
  - **Show Effect:** Image Effects Selection (None, Rich, Vivid, Black and White, Sepia).
  - **Auto Tilt:** Image Auto Position Adjustment Selection (On or Off).
  - **Language:** Language Selection (English, Français, Deutsch, Italiano, Español, Русский, Brazilian Portuguese, Portuguese).
  - **Wallpaper:** Background Image Mode Selection (Default, User).
2. Press **<** or **>** to confirm.
  3. Press **V** or **Λ** to select the setting.
  4. Press **Mode** to exit.

#### 4.5.3 Adjust Calendar settings

1. Press **Enter** to access the **Setup Menu** and select **Calendar**.

The **Calendar** menu is displayed.



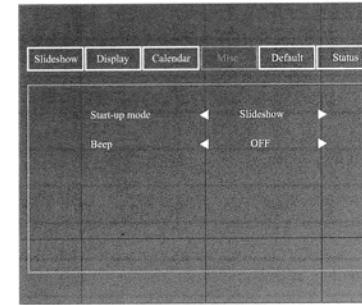
#### Description of Calendar settings:

- **Date:** Date Adjustment (MM - DD - YYYY).
  - **Clock:** Clock Adjustment (HH: MM: SS).
  - **Calendar Display Mode:** Calendar Display Adjustment (Calendar+Picture / Calendar+Clock).
  - **Clock Display Mode:** Clock Display Adjustment (Digital/ Graphic).
  - **Power-On:** Auto Power-on time setting (Off, On) - (HH: MM).
  - **Power-Off:** Auto Power-off time setting (Off, On) - (HH: MM).
  - **Alarm:** Alarm Time Setting (Off, Once, Everyday) - (HH: MM).
2. Press **<** or **>** to confirm.
  3. Please **V** or **Λ** to select the setting.
  4. Press **Mode** to exit.

#### 4.5.4 Adjust Misc settings

1. Press **Enter** to access the **Setup Menu** and select **Misc**.

The **Misc.** menu is displayed:



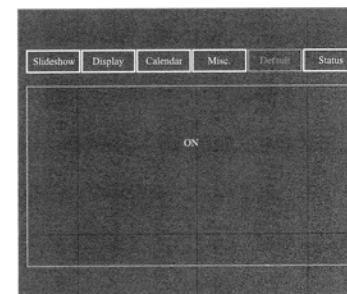
#### Description of Misc. settings:

- **Start-Up mode:** Display mode selection for power on (Slideshow, Main menu, Calendar, Clock).
  - **Beep:** ON or OFF.
2. Press **<** or **>** to confirm.
  3. Please **V** or **Λ** to select the setting.
  4. Press **Mode** to exit.

#### 4.5.5 Restore to Default settings

1. Press **Enter** to access the **Setup Menu** and select the **Default**.

The **Default** menu is displayed:



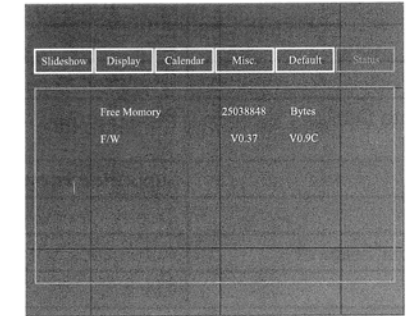
2. Press **V** or **Λ** to select the setting.

3. Press **Enter** to confirm.
4. Select **Yes** or **No** and press **Enter**.
5. System will restore to the default setting if **Yes** is selected.
6. Press **Mode** to exit.

#### 4.5.6 View Status

1. Press **Enter** to access the **Setup Menu** and select **Status**.

The **Status** menu is displayed:



#### Description of Status settings:

- **Free Memory:** Free memory
  - **F/W:** Firmware version
2. Press **Mode** to exit.



## 5. Specifications

LCD Panel	Display Size/Type	7"W
	Panel Resolution	480x 234
	Aspect	16:9
System Memory	System	32 MB
	Firmware	7 MB
	Available	25 MB
Local Keys	Power Switch Key	X 1
	Key Control	6 keys
Connectivity	USB 2.0 (OTG)	1
	Card Reader	SD/MS/MMC/CF
	DC Power In	5V/2A (min.)
	Photo Display	Single Picture/Thumbnails/Slideshow/Personalized Frame
Photo Display	Supported Format	JPEG
	Display Orientation	Portrait/Landscape
	Automatic Pivot	Auto Pivot
Other Features	Clock	Yes
	Calendar	Yes
	Multi-language OSD Support	English, Français, Deutsch, Italiano, Español, Русский, Brazilian Portuguese, Portuguese.
General Specifications	Power Consumption	10 Watt (DC)
	Dimensions (without foot stand)	12.1" x 8.8" x 1.9" (Width x Height x Depth)
	Dimensions (with foot stand)	12.1" x 8.8" x 5.0" (Width x Height x Depth)
	Net Weight	1.68 lbs